

Appendix 6.1: External Fish Health Assessment Example Chart.



Plate A6.1: Cysts on skin of *C. carpio* (Score=3)



Plate A6.2: Skin necrosis on *Lb. aeneus* (score=1)



Plate A6.3: Skin necrosis on *Lb. aeneus* (Score=1)



Plate A6.4: Skin and fin necrosis in *C. gariepinus* (score 1).



Plate A6.5: Cysts on skin of *C. gariepinus* (score=1).



Plate A6.6: Healthy skin and fin of *L. capensis* (score=5)

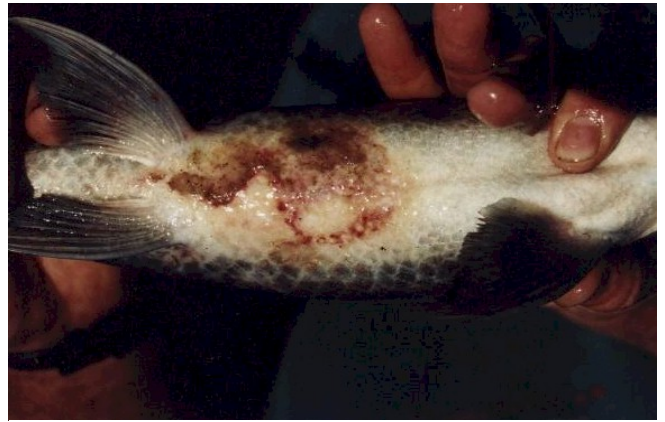


Plate A6.7: Active skin tissue degradation in *L. capensis* (Score=1)



Plate A6.8: Mild skin damage in *L. capensis* (Score=3)



Plate A6.9: Severe active fin erosion in *L. capensis* (Score=1)



Plate A6.10: Severe active fin erosion in *L. capensis* (Score=1)

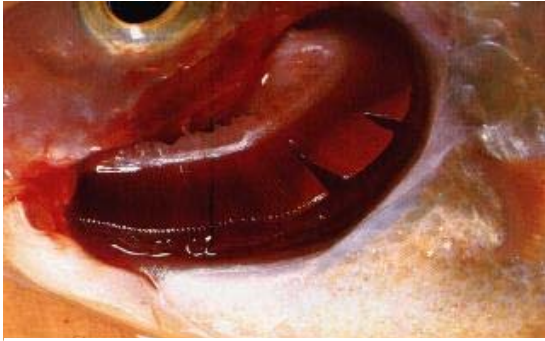


Plate A6.11: Healthy gills of *Lb. aeneus* (score=5)



Plate A6.12: Slightly frayed gills of *L. capensis* (Score=3).



Plate A6.13: Gill damage in *L. capensis* (score=1)



Plate A6.14: Abnormal opercula in *Lb. aeneus*. (Score=1)